



Philanthropy Report 2019/20

>>>>>>

>>>>>>

>>>>>>

>>>>>>

>>>>>>

>>>>>>



The Royal
Melbourne Hospital
Foundation



Contents

Welcome	4
Your support	5
Responding to COVID-19	
The Jack Ma Foundation awards Doherty Institute AU\$3.2 million to accelerate a vaccine for COVID-19	6
Thank you to our community	8
Community support	
Our little fundraisers make a big difference	10
Generous donations during a pandemic	10
The Royal Melbourne Hospital Home Lottery	11
Thank you to the Lovell Foundation	11
Chinese community support	12
Peson and family centred care	
Innovation and adaption have been key with dealing with the current COVID-19 crisis	14
Staff auction	15
A special thank you to the Dry July Foundation	16
Our significant supporters	
Acknowledging contributions	18
World-Class Research	
Major funding boost for prostate cancer prognosis and treatment	22
Pfizer supports The Royal Melbourne Hospital to fund Inflammatory Bowel Disease Fellowship	23
The Garnett Passe and Rodney Williams Memorial Foundation funds pioneering research collaboration for oral cancers	24
The Norman Beischer Medical Research Foundation funds new research addressing sleep apnea in multiple pregnancy	26
Philanthropy enables research into rare blood cancer	28
Developing our workforce	
Mellissa Weinstein awarded Dana Zilinskas Fellowship	30
New fellowship for emerging research leaders	30
New master's degree will provide advanced training in Emergency Mental Health	31
Johnson and Johnson Medical	31
Innovative equipment and technology	
A new ECMO machine for critically ill patients	32
Our most successful Christmas Appeal ever	33
New partnership with BankVic	33
Infrastructure for the Future	
New operating theatres	34
Technology saving lives	35



Welcome

On behalf of The Royal Melbourne Hospital Foundation, I am pleased to present our 2019/20 Philanthropy Report.

Philanthropy has played a key role in The Royal Melbourne Hospital's rich history. In 1848, as Victoria's first public hospital, we were founded through significant donations from the community. At that time we had only 10 beds to our name, but we had the community of Melbourne behind us, and the mission to provide the best possible care for those in need.

Today, more than 170 years on, philanthropy continues to play a pivotal role in our mission to always be there when it matters most.

Thanks to the generosity of more than 10,000 supporters, The RMH Foundation received donations and revenue of \$27.96 million for the period of July 2019-June 2020.

Last year our health service was challenged like never before and this support has been more important than ever. In 2020, when the COVID-19 pandemic appeared, The RMH was at the forefront, caring for more COVID-19 patients than any other hospital in Australia and playing a crucial role in testing across the community and in vaccine development.

To respond to this challenge we knew we would need the help of the community. We appealed to the public and the response was overwhelming, raising over \$1 million. This generosity enabled us to adapt and respond quickly to the hospital's most urgent needs.

In addition to responding to urgent needs of our community, The RMH Foundation

supported The Doherty Institute for Infection and Immunity with ongoing vaccine development research via a \$3.2 million grant from the Jack Ma Foundation.

However this past year hasn't just been about COVID-19. The RMH continued to provide care for many non-COVID patients across its extensive services and thanks to you - innovative research and discoveries were funded, lifesaving technology purchased, ageing infrastructure redeveloped and we were able to invest in the next generation of leading clinicians, scientists, nurses, researchers and educators.

A selection of these initiatives have been profiled throughout this report and I hope you enjoy reading about how your contribution has helped make a difference, transforming the lives of patients across Victoria and making important contributions to Australian and global research.

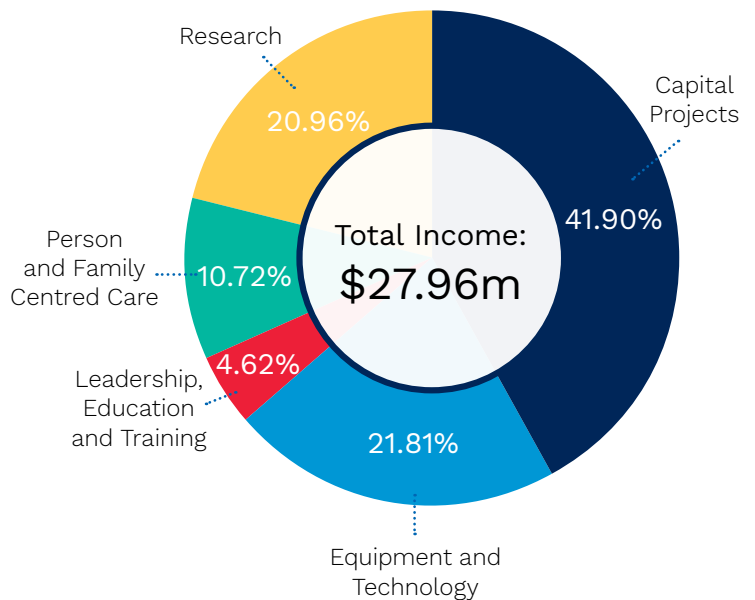
We are incredibly grateful for the support from each and every one of you. I would like to specifically acknowledge Barbara Haynes, George and Julia Hicks and the Jack Ma Foundation whose generosity has been transformational.

On behalf of the staff and patients here at The RMH - thank you for supporting our vision to have a world-class facility where we can Advance Health for Everyone, Every Day.

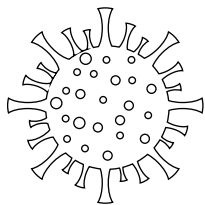
Ed Smith
Director
The Royal Melbourne Hospital Foundation

Your support

2019/20 Financial Year Summary

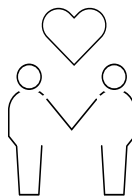


Highlights



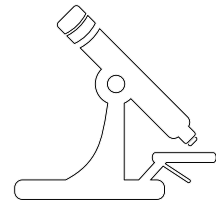
Responding to Covid-19

- Over \$1M raised for our COVID-19 appeal
- \$3.2M funding for vaccine development in collaboration with the Peter Doherty Institute of Infection and Immunity
- A new Corpuls CPR device purchased for our ICU



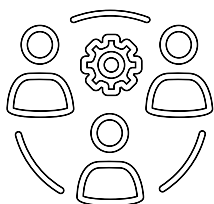
Person and Family Centred Care

- Lecture series aimed to help carers of patients with young onset dementia was funded
- \$40k directed towards our Music Therapy Program
- Patient care, comfort and wellbeing items purchased for our cancer service



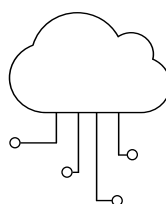
World-Class Research

- The RMH in collaboration with the University of Melbourne received \$5.4M for prostate cancer research
- \$1M funding towards Dermatology Research
- \$250k awarded to establish the Head & Neck Cancer Organoid Biobank



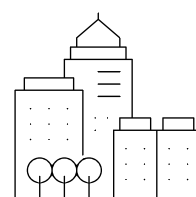
Developing our Workforce

- Annual fellowship created for emerging research leaders
- Pfizer IBD Fellowship awarded for an early career gastroenterologist specialist



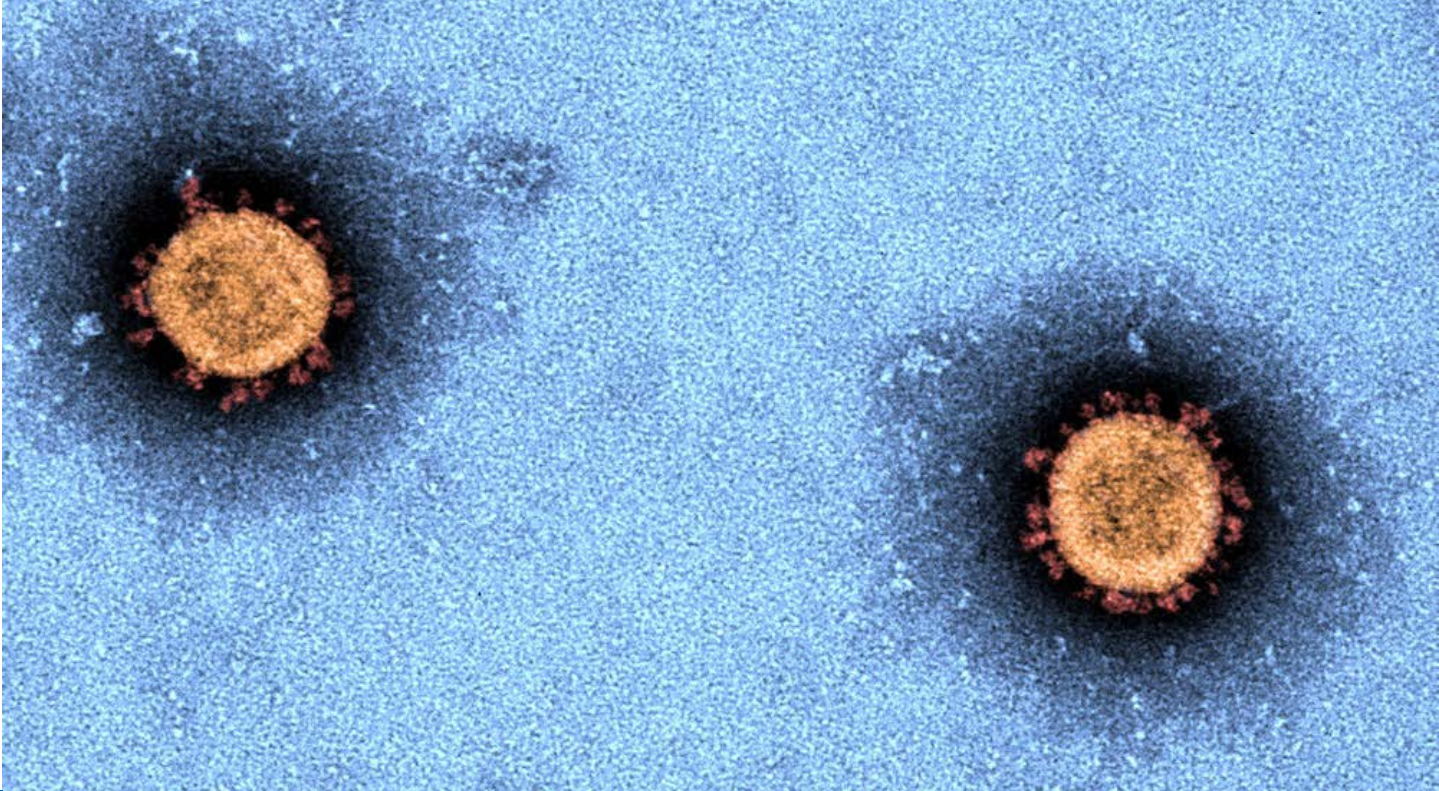
Innovative Equipment and Technology

- Over \$3M of new equipment funded
- 2 new ECMO machines for our ICU
- \$140k raised to funds raised towards a new Airo mobile CT scanner
- Equipment purchased for our new Acute Stroke and Neurology Ward



Infrastructure for the Future

- Opened 2 new operating theatres
- Funding raised for stage 4 of the Cardiac Rhythm Centre
- ICU waiting room refurbished



Electron microscopy image courtesy of Dr Jason Roberts, Doherty Institute

Responding to COVID-19

The Jack Ma Foundation awards Doherty Institute AU\$3.2 million to accelerate a vaccine for COVID-19

The Peter Doherty Institute for Infection and Immunity (Doherty Institute) – a joint venture between the University of Melbourne and The Royal Melbourne Hospital – was awarded AU\$3.2 million (US\$2.15 million) by the Jack Ma Foundation to expedite the development of a vaccine against COVID-19.

The World Health Organisation (WHO) has described the COVID-19 coronavirus pandemic as the “defining global health crisis of our time”. Since the outbreak was first detected in Wuhan, China at the end of 2019, the virus that spread rapidly around the world has infected 122 million people and caused 2.69 million deaths in little more than 12 months (19 March 2021). With no vaccine or effective therapeutic agents to mitigate the novel virus infection and spread, the world watched throughout 2020 as the COVID-19 pandemic overwhelmed resources in previously well developed, well-resourced nations.

Scientists from RMH Victorian Infectious Diseases Reference Laboratory at the Doherty Institute were the first to grow COVID-19 in the laboratory outside of China, and the first to share it with

public health laboratories nationally and globally at the end of January 2020. Announced in March 2020, catalytic funding from the Jack Ma Foundation enabled the Doherty Institute to accelerate research and development of active and passive vaccination platforms, as well as other capabilities in the vaccine development pipeline.

The Doherty Institute COVID-19 Vaccine Development Initiative aims to develop an effective vaccine against the novel coronavirus. Funding for the Initiative is being directed towards three areas, the first of which is an active vaccine platform, the process of stimulating the body to produce antibodies through administration of a vaccine. The second is a passive vaccine platform, which is the direct transfer of antibodies to a non-immune individual, providing temporary protection; and the third, determining vaccine efficacy, safety and readiness for phase one human trials.

“While the path to creating a vaccine is complex, we have the expertise and infrastructure here at the Doherty Institute to take on this task, and now, thanks to the Jack Ma Foundation, the funding to accelerate this significant project,” said Director of the Doherty Institute, University of Melbourne Professor Sharon Lewin.

“Together with active surveillance, quarantine and other public health interventions, a vaccine is the most

“This important funding will help continue the efforts of our scientists in finding a vaccine and treatment for COVID-19 as part of the global effort to seek solutions to this worldwide health issue,” said Professor Kilpatrick.

effective means of preventing new infections at scale in a population. If transmission continues as predicted, safe and effective vaccines will be needed to help sustain long-term approaches to disease control and to prevent severe mortality and morbidity over time.”



Established by Alibaba Group founder Jack Ma (pictured left) in 2014, the Jack Ma Foundation has been primarily focused on supporting projects and initiatives to support education, entrepreneurship, women's leadership and the environment.

The contribution to the Doherty Institute was part of an overall US\$14.4 million (AU\$21.9 million) investment the Jack Ma Foundation has committed towards research efforts in China and internationally into combatting COVID-19. In February 2020 the Foundation awarded US\$2.15 million (AU\$3.2 million) to Columbia University to identify potential antiviral drugs and antibodies for use against the virus.

Calling on all institutes and scientists globally to collaborate with confidence to defeat the pandemic, Jack Ma, founder of the Jack Ma Foundation said:

“The Jack Ma Foundation and I will exhaust our abilities to provide more help to the development and growth of medical science.”

Professor Christine Kilpatrick, CEO of The RMH, said the organisation was incredibly proud of the work of their leading scientists at the Doherty Institute who have been instrumental in progressing treatment and care for COVID-19.

Professor Shitij Kapur, recent past Dean of the Faculty of Medicine, Dentistry and Health Sciences at the University of Melbourne, commended the Jack Ma Foundation for its leadership by investing in the Doherty Institute.

“The Doherty Institute is a unique partnership between Australia's leading hospital and university and the broader

Melbourne Biomedical Precinct – and that is what enabled it to be one of the first to isolate the COVID-19 virus. We now need to develop the science of vaccines and treatments,” said Professor Kapur.

Developing a Melbourne-based COVID-19 vaccine candidate

Twelve months on in development, a team of researchers at the Doherty Institute now has a vaccine candidate that is demonstrating encouraging results in preclinical testing.

The Receptor Binding Domain (RBD) Vaccine candidate focusses on the RBD protein, the tip of the spike on the viral particle surface to focus the immune response on this critical part of the virus and encourage the production of highly specific antibodies to neutralise the virus.

Professor Dale Godfrey, Immunology Theme Leader at the Doherty Institute, said the Doherty Institute's vaccine approach were very different to other Australia-based candidates currently in clinical trials.

“SARS-CoV-2, the virus that causes COVID-19, is enveloped by proteins that resemble spikes, which enable the virus to attach and enter cells. This attachment is mediated by the tip of the spike protein, known as the receptor binding domain (RBD). Our vaccine candidate is focusing specifically on the RBD because if we can block this attachment we can block infection,” Professor Godfrey said.

“The spike protein is viewed as the most important target for antibodies produced by the immune system because most antibodies that neutralise the virus do so by targeting the RBD region of the spike.”

The RBD protein vaccine lead candidate is progressing at an accelerated speed, demonstrating promise as a global vaccine product that is highly competitive. A proprietary adjuvant platform has been chosen for first-in-human clinical studies for the RBD vaccine. The RBD Vaccine is the lead Jack Ma Foundation candidate, and remaining funding from the original grant will be directed towards preclinical testing of the lead RBD Vaccine for testing, toxicology, production and clinical trials.



Testing samples for COVID-19 at The RMH

Thank you to our community

The Royal Melbourne Hospital (RMH) cared for more COVID-19 patients than any other hospital in Australia in 2020. While we were caring for our patients during the pandemic, the community rallied in support of our staff.

During our COVID-19 Appeal the community came together and raised an astonishing \$944,000. These generous donations have allowed The RMH to respond quickly to a range of unexpected needs that arose during the COVID-19 crisis, including:

- Patient communication devices that allow patients to connect with families while they were unwell in hospital with COVID-19.
- Home monitoring for patients with less severe COVID-19 which allow people to recover at home while ensuring their vital stats are monitored and our care team can respond if they require readmission.
- Licenses and app development to assist staff in managing their mental health during the high work load and stressful time.
- IT equipment to enable rapid expansion of Telehealth services.

We were humbled to receive transformational donations from some of our most generous and loyal donors to help respond to the unique needs the COVID-19 pandemic created. Special thanks to:

Katy Honig who purchased a Corpuls CPR device for use in the Intensive Care Unit (ICU) after seeing Professor Chris MacIsaac interviewed on the challenges presented by COVID-19. This device reduces the risk of staff contracting COVID-19 while performing CPR on patients.

Lindsay Fox AC and Lloyd Williams who made a \$500,000 commitment over five years to fund equipment and research in The RMH ICU.





Orlando Steiner (second from left) pictured with his family

Community support

Our little fundraisers make a big difference

Annabel Wang was 9 going on 10 when she decided that her \$300 worth of birthday money would go to The Royal Melbourne Hospital (RMH). Annabel said that she wanted to help the doctors and nurses because they were saving lives. Annabel's little brother Alex also said thank you by drawing a picture for our staff.

Eleven year old **Olivia Karcoushkas**, whose tie-dye creations have skyrocketed in popularity, began fundraising in memory of her aunty Laura who sadly passed away in December 2018. So far, Olivia has raised over \$1500 with a percentage of proceeds going straight to The RMH Intensive Care Unit.

During COVID-19, **Elliette Jeffrey** took up sewing under the guidance of her grandma so she could sell facemasks to the community. All of this 11 year old's profits have gone towards The RMH and other organisations developing a vaccine for COVID-19.

Orlando Steiner was a little bored during lockdown and helped mum and dad clean out their home when he came across a raffle booklet. He originally planned to raffle off a hug to his immediate family members for 'people who are affected

from COVID-19'. Word of the raffle spread virtually to other members of his family and everyone wanted to pitch in and buy a ticket. Due to social distancing restrictions, Orlando couldn't put a hug up as the prize, but he found other prizes around his house for the ticket holders and raised \$150 for The RMH.

They may be little but their initiative is making a big difference to The RMH and the Victorian community. Thank you Annabel, Olivia, Elliette and Orlando for your fundraising!

Generous donations during a pandemic

Hewlett Packard: 15 laptops for the Department of Pharmacy, which integrate with our electronic patient system to improve efficiency when caring for patients and administering medication.

Telstra: 20 Samsung tablets for COVID-19 wards to enable communication between patients and family / friends.

Motorola: 10 mobile handsets for use on COVID-19 wards to improve communication between patients and family / friends.

The Royal Melbourne Hospital Home Lottery

Glen's life completely changed when Christian O'Connell from Gold FM called and awarded him the grand prize for TheRoyal Melbourne Home Lottery - a \$4.2M, 2 story home in Brighton.

Every RMH Home Lottery ticket helps fund state of the art equipment, new treatments and world-class research, which helps us provide the very best care.

One of the areas that this particular lottery supported was The RMH Heart Rhythm Centre, which will be the only dedicated arrhythmia management and research laboratory in our public health system.

Professor John Kalman AO will be leading the new centre and anticipates that this facility will make a significant impact on patients' lives.

Congratulations to Glen and the family!



The Royal Melbourne Hospital Home Lottery Grand Prize

Thank you to the Lovell Foundation

Garry Lovell fought the 2009 Black Saturday fires in his Yarra Valley backyard. His defence with the Christmas Hill's fire brigade stopped flames reaching some of his neighbours' homes. The following year he was diagnosed with younger onset dementia. Garry was 47.

Establishing the Lovell Foundation, Garry and his wife Mandy dedicated themselves to advocating for and establishing age appropriate residential settings for patients with younger onset dementia.

In 2019, the Lovell Foundation provided a generous donation to the Neuropsychiatry Unit at The Royal Melbourne Hospital to establish an annual Lovell Lecture series aimed at families and carers of patients with younger onset dementia.

Sadly, Garry passed away in 2020 but his legacy is his astounding work as an advocate committed to making a difference to the lives of others, in a lifespan cut too short.



Impact the Future Giving Circle

Chinese community support

In 2020, in a pandemic year, our Chinese community groups rallied around to raise much needed funds for The Royal Melbourne Hospital (RMH). We would especially like to thank:

Chinese Masonic Society

The Chinese Masonic Society (CMS) has had an enduring history with The RMH for over 100 years, and thanks to friends and supporters of the CMS, and under the guidance of President, Teresa Chung, they launched an appeal to raise funds for Syringe Drivers, used to continuously manage patients' symptoms and pain at all times.

See Yup Society

The See Yup Society celebrated the Year of the Rat with a luncheon for Committee members and we were honoured to be presented with a cheque of \$10,000 for equipment for The RMH Emergency Department to treat COVID-19 patients.

Oceania Federation of Chinese Organisation (VIC) and (SA)

Acting Minister for Immigration, Citizenship, Migrant Services and Multicultural Affairs, The Hon Alan Tudge MP Alan Tudge joined members of the Oceania Federation of Chinese Organisations from Vietnam, Cambodia

and Laos at the RMH where they presented a donation of more than \$37,000 for the hospital's COVID-19 appeal. The donation was directed to the hospital's front line response as well as research into treatment options and vaccines.

Australian Chinese Giving Circle

Harry Ma established the Australian Chinese Giving Circle during the COVID-19 crisis to encourage the local Chinese community to give back to Australia during this global pandemic. Members of the giving circle raised over \$32,000 for Cardiothoracic Anaesthesia to help cope with the increased demand on the health system as a result of the COVID-19 crisis.

Australian Chinese Events Committee

In 2020, the Australian Chinese Events Committee (ACEC) raised funds for a blanket warmer for the Emergency Department. Blanket warming cabinets provide a safe and easy method to reduce the physical and psychological stresses of trauma and surgery.

Impact the Future Giving Circle

Impact the Future is a Giving Circle of the Lord Mayor's Charitable Foundation aims to raise awareness and empower change in the community. In 2020, this group of like-minded people raised \$4530 for the Intensive Care Unit to reduce the risks associated with equipment shortfalls during COVID-19.





Dr Martin Dutch with a pulse oximeter which measures oxygen in the blood

Person and family centred care

Innovation and adaption have been key with dealing with the current COVID-19 crisis

In a quick thinking move, staff in the Emergency Department at The Royal Melbourne Hospital (RMH) have created a platform to monitor patients for COVID-19 symptoms outside of the hospital.

The program was set up to assist with anticipated pandemic numbers of COVID-19 patients expected at The RMH. The idea was to use pulse oximeters, a small device that typically clips on to your finger, toe, or earlobe to measure oxygen levels in the blood. Using this device, staff could effectively monitor patients from their homes, allowing for a reduction in people using beds while still maintaining peace of mind.

The program was designed to safely send patients who do not currently require hospital treatment back home to self-quarantine, whilst still being able to rapidly identify a subset of patients who subsequently become significantly unwell and need to return to hospital.

The RMH staff have created a novel software solution which assists patients

to manage their own health, by monitoring their oxygen levels at home, and reporting back into the hospital using their own smartphone twice a day.

Every few hours the patient is asked to record vital signs and record the data, which is fed back into the hospital system. If there is a reason for concern the software will trigger a Met Call- a process which notifies the supervising clinician of a potential deterioration in the patient.

A pulse oximeter is a small electronic device that estimates the saturation of oxygen in your blood. According to the World Health Organisation, a healthy person should have a reading between 95%-100%. If the number drop below 92% this is reason for concern.

Emergency Department consultant, Dr Martin Dutch developed the program which has capacity to monitor 1000 patients.

“This is a cheap and effective way of monitoring patients and giving them peace of mind, knowing the hospital is keeping an eye on them when they aren’t physically on-site,” Dr Dutch said.

In the treatment of COVID-19 it’s become more apparent that patient’s symptoms often become worse during the second

“The costs of setting up a system are particularly affordable. The underpinning software is free to use for all health institutions, and our adaption can be downloaded for free,” said Dr Dutch.

week of the illness. Monitoring from home means staff will be alerted immediately if there is any change to vital signs and importantly oxygen levels.

“COVID-19 provides some unique challenges for the health system. It is now clear that a subset of patients may have a very significant deterioration in their health in their second week of illness.

“This deterioration can often begin to occur silently, without a significant worsening of symptoms. A number of international centres are now recommending the early identification of this subgroup of patients, through use of pulse oximeters in the community,” Dr Dutch said.

However many health systems do not have processes setup to remotely manage large numbers of at risk individuals in the community.

The program uses a novel adaptation of REDCap™, a commonly used piece of hospital software, found in over 300 health institutions in Australia, and over 4,000 internationally. By linking this software to an SMS service, RMH Staff have developed a comprehensive system to reach out to patients in the community via text message, and allow them to reply with the oxygen level measurements and other important health information.

This system has been built with pandemics in mind, and is designed to handle large numbers of patients, with integration of automated advice to patients on their self-care, and the promotion of important public health messages.

Staff auction

Last year's staff online auction created some fun and competitiveness between colleagues with more than 375 people registering and close to \$17,000 raised. From all of us at The Royal Melbourne Hospital Foundation, congratulations to all the lucky recipients and a big thank you to everyone who got involved.

As a direct result of the funds raised, we can now fund much needed equipment and patient-care items at our City and Royal Park campuses.

Nurse in The RMH COVID-19 ward





Dry July ambassador Steve Mahoney and wife, Robyn

A special thank you to the Dry July Foundation

For cancer patient, Steve Mahoney, life has changed dramatically after he received his diagnosis in July 2019. After discovering a mouth ulcer, he went straight to the doctor. Steve considers himself a fighter, so the word 'cancer' did not frighten him. While both Steve and his wife of 12 years, Robyn were prepared for the battle, they admitted they did not know anything about head and neck cancer, or what lay ahead as they drove to The Royal Melbourne Hospital (RMH) from the Mornington Peninsula for treatment. Steve soon had to give up working in the panel beating business in preparation for the many months of surgery and treatment.

Steve's cancer resulted in many complications – infections, jaw dislocation,

two tracheotomies, all within six months in and out of the hospital. One of the operations was longer than 12 hours. At one point, Steve had to prepare for the worst and organise his affairs. It was a stressful time, and he owes his strength to Robyn's support. He told us that he would leave messages for Robyn on a whiteboard before going into each surgery telling her how he wouldn't be able to get through these challenges without her.

When Steve heard about the Dry July campaign, he did not hesitate to sign up as an ambassador.

For over 10 years, the Dry July Foundation and The RMH Foundation have collaborated to successfully raise funds for patient-care projects and equipment for cancer at The Royal Melbourne Hospital. Congratulations to our fabulous ambassadors, Steve and Robyn Mahoney, and all of the participants in Dry July who raised nearly \$48,000 to improve patient care, comfort and wellbeing within our cancer services. Because of you, we will be able to provide a room where head and neck, gastro and hepatobiliary patients can tube feed in private. Funding will also enable our Music Therapy team to purchase mobile studios to deliver our therapeutic song writing program safely in our Haematology Ward and garden.

With the COVID-19 pandemic, this year is even more significant than ever for our cancer patients. Sign up or donate to Dry July today to ensure The RMH continues to provide cancer patients with the highest level of comfort and wellbeing during this pandemic.

“The staff were amazing and kept me informed every step of the way, especially when I had my tracheotomies. Robyn was by my side every night at the hospital. When the COVID-19 visitor restrictions were introduced, she could only see me for an hour a day but The Royal Melbourne Hospital staff continued to keep her in the loop. We felt so cared for, and The Royal Melbourne Hospital became a 'safe house' for us.”



Our significant supporters

The Royal Melbourne Hospital Foundation recognises and is deeply appreciative of the generous support received from individuals, businesses, trusts, foundations, community groups and organisations. It gives us great pleasure to acknowledge these contributions below:

Trusts & Foundations

Annie Josephine Wellard Charitable Trust, managed by Equity Trustees
Awesome Foundation Melbourne
Circle of Latitude Foundation
Crown Resorts Foundation
Dry July Foundation
Estate of Milan Kantor
Fight Cancer Foundation
Guthrie Family Charitable Trust
Jack Ma Foundation
J & M Nolan Family Trust
Johnson Family Foundation
Lord Mayor's Charitable Foundation
Norman Beischer Medical Research Foundation
Sydney Maxwell Wellard Charitable Trust, managed by Equity Trustees
The Bell Charitable Fund
The Garnett Passe & Rodney Williams Memorial Foundation
The Hugh D T Williamson Foundation
The Lovell Foundation
The William Buckland Foundation
Victoria Police Blue Ribbon Foundation

Gifts in Wills

Estate of Angelina Cardillo
Estate of Agnes Ferguson Clark
Estate of Heidi Goldstein
Estate of Marie Grima
Estate of Raymond Patrick Hallion
Estate of Audrey Florence Nancarrow
Estate of Daphne O'Hanlon
Estate of Norbert Schober
Estate of Ronald Irwin Simmonds
Estate of Pamela Stephens

Endowments

Estate of Allan Watt & Chris Geyer
Estate of Dr Margaret Henderson OBE

Gifts in Perpetuity

Albert Spatt Charitable Trust
Alexander Clarke MacBean Bequest
Anderson Gray Fund
Andrew James Schreuder Foundation
Charles Wright Trust
Doris & Rupert Joseph Charitable Trust
E C Blackwood Charitable Trust
Eliza Wallis Charitable Trust
Ernest & Letitia Wears Memorial Trust
Estate of John Anderson
Estate of Arthur Lindhurst Blannin
Estate of Benjamin Champion
Estate of Henrietta Lucy Cherry
Estate of Edward Davies
Estate of Alfred Herman William Dehnert
Estate of Dorothy Winifred Dike
Estate of Irene Daisy Dike
Estate of Ethel Mary Drummond
Estate of Mary Ann Edwards
Estate of George Lawrence Godfree
Estate of Herbert William Hampton
Estate of Louisa Henty
Estate of Ernest John Kebby
Estate of Joseph & Kate Levi
Estate of William Macrow
Estate of Charlotte Marshall
Estate of William Marshall
Estate of Mary Mason
Estate of J R G & E McKenzie
Estate of Margaret Lillian Merrifield
Estate of Isabella Agnes Pritchard
Estate of Muriel Ivey Smith
Estate of Emily Vera Winder
Estate of John Frederick Wright
Estate of Ephraim Yoffa
Eugene & Janet O'Sullivan Trust
Grant Bequest
Haydn & Henrietta Williams Memorial Trust
John Henry James Symon Charitable Trust

John Lambrick Trust
 Joseph Herman Charitable Trust
 Joseph Kronheimer Charitable Fund
 Louis Berner Charitable Trust
 Louis John Wahlers Trust Fund
 Martha Miranda Livingstone Fund
 Mary Evelyn Bowley Charitable Trust
 Mary MacGregor Trust
 Mary Symon Charitable Trust
 Mr & Mrs Simon Rothberg Charitable Trust
 Thomas B Payne Fund
 Werge Batters Perpetual Charitable Fund
 William & Mary Ievers & Sons Maintenance Fund

Major Benefactors

Mr Andreas Andrianopoulos
 Mrs Nadia Colaluca
 Mr Andrew Domasevicius-Zilinskas
 Mr Andy & Mrs Rebecca Drewitt
 The Fox Family Foundation
 Mrs Barbara Haynes OAM
 Mr George & Mrs Julia Hicks
 Ms Katy Honig
 Mr Bruno & Mrs Elizabeth Moras
 Prof Andrew Roberts AM
 Mr Mark Robertson OAM & Mrs Anne Robertson
 Mr Jintang Rong
 Mr & Mrs Lloyd Williams

Major Benefactors (Lifetime)

Dr John & Mrs Diana Frew
 Ms Linda Nicholls AO
 Mr Phuc Nguyen

Major Donors

Ms Susan Alberti AC
 Mrs Roseanne Amarant
 Mr Noel Arnold
 Mr Eugene Arocca
 Ms Kate Austin
 Mr Warwick Bisley
 Mr John Boardman
 Mr Rajesh Boghani
 Mr Stefan & Mrs Nevenka Bradica
 Mr Arnold & Ms Mary Bram
 Mr Andrew & Mrs Robina Brookes
 Mr Anthony Bryer
 Mr William Bulling

Mr Ray & Mrs Orianne Burton
 My Russell Byard
 Mr Anthony Calabrese
 Mr John & Mrs Janet Calvert-Jones
 Ms Guiyun Chen
 Mr Andy Cheng
 Miss Annie Clemenger
 Ms Sue Clifton
 Ms Nancy Cole
 Mr Bruce Collins
 Mr Brett Coulson
 Prof Benjamin Cowie
 Mrs June Danks
 Mrs Mermera Dautovic
 Ms Deborah De Jager
 Mrs & Mr Dickinson
 Prof Robert Dixon
 Mr & Mrs Di Natale
 Mr & Mrs N Do
 Jingyu Dong
 A/Prof Kate Drummond
 Mrs Susan Duncan
 Mr Nigel Dymond
 Mr Neville Elliott
 Ms Ellen Flint
 Ms Andrea Fox
 A/Prof Spiros Fourlanos
 Mrs Verna French
 Mr Rong Fu
 Ms Georgia Gall
 Mr Rajan Gautam
 Mr Neil Gerhard
 Mrs Kerry Goldsworthy
 Mrs Nancy Goode
 Mr Theo Gouskos
 Miss Sam Grapsas-Ekperuoh
 Mr Michael Gunter
 Mr Michael Halfpenny
 Mr George Hallas
 Ms Katherine Harber
 Miss Jennifer Harvie
 Ms Rosemary Hawke
 Mr Corey Heard
 Mr Leigh Hocking
 Mrs Uyen Huynh
 Mrs Margaret Irvine
 Mr Alexander Jamieson
 Feka Jefeka
 Mr Tim Jiang

Mr Mark & Mrs Sara Kagan
 Prof Shitij Kapur
 Mr Shainal Kavar
 Mr Richard Kennedy
 Mr Michael Khavounitis
 Mr B Khoo
 Prof Christine Kilpatrick AO
 Mrs Glenda Kiossoglou
 Mr Stan Komora
 Mr Chan Phun Lau
 Mr Stanley Lee
 Mr Wilson Leow
 Prof Katherine Leslie AO
 Mr Paul Lightfoot
 Mrs Tran & Mr Ky Lim
 Xinyi Lin
 Ms Gillian Liu
 Ping Liu
 Ms Barbara Long
 Ms Jean Low
 Ms Irene Lu
 Co Frank Luong
 Mr Steven Ly
 Dr John Lynch
 Mr Gavan McKenna
 Ms Qui Ma
 Prof Finlay Macrae AO
 Mr Michael Mak
 Mrs Tina & Mr Kon Marinakis
 Mrs I McCall
 Mr Sean McGaffin
 Mr Rex McNeill
 Mr Ron & Mrs Victoria McNeilly
 Mr Paul McSweeney
 Mr Colin & Mrs Joceyln Mead
 Ms Gina Mifsud
 Mr John Mikuz
 Mrs Emma Miller
 Mrs Pamela Miller
 Ms Marlene Mogford
 Family of the Late Rosalie Mordech
 Mr Robert Muirhead
 Mr Baillieu Myer AC & Mrs Sarah Myer
 Prof Harvey Newnham
 Mrs Ha Ngo
 Nguyen Family
 Mr Phu Nguyen
 Miss Namphuong Nguyen
 Mr Mustafa Oksuz

Mrs Dianne Pantela
 Mr Russell Peters
 Mrs Dianna Perry
 Ms Nancy Price
 Mr Geoff Provis
 Mr John Richards OAM
 Mr Wayne Robinson
 Ms Barbara Rozenes OAM
 The Late Ms Clare Sendapperuma
 Mr Hadrianus Setiawan
 Eriona Shirokaj
 Mr Edward Smith
 Ms Carol Soderstrom
 Lady Marigold Southey AC
 Mr Graham Spring
 Mr Larry Stewart
 Mr Richard Stradwick
 Mr Neil Strapp
 Mrs Joyce Strawhorn
 Mr Shian Su
 Miss Yee Tan
 Teck Ming Tang
 Mr Binh Thai
 Mr Gary & Mrs Nicole Thompson
 Mrs Judith Thomson
 Ms Praniti Tiwari
 Ms Alison Todd
 Mr Binh Tran
 Dr Gad Trevaks AM
 Ms Jill Turpin
 Mr Greg Tweedly
 Mrs Luisa Valmorbida
 Mr Andrew & Mrs Cheryl Valneris
 Lanzhen Wang
 Manyin Wang
 Mr B.J. Waters
 Mr Daniel Wissa
 Mrs Kamalpreet Waraich
 Prof David Wiesenfeld
 The Hon. Richard Wynne MP
 Ms Yuan Xing
 Mr Jie Yang
 Ms Xiaolin Zhai
 Mr Marcus Zhongqiang

Corporate Partners

Atypic Chocolate
 AV Media Systems

Bakers Delight
 BankVic
 Bongiorno Group
 C.R. Kennedy & Company Pty Ltd
 Cheng Investment Aust Pty Ltd
 Cook Medical
 Coregas Pty Ltd
 De Bortoli Wines
 FCG Property
 Hampers With Bite
 Janssen - Cilag Pty Ltd
 Johnson & Johnson Medical Pty Ltd
 KLS Martin
 Lindt & Sprüngli (Australia) Pty Ltd
 Medtronic Australasia Pty Ltd
 Mindray Medical Australia
 Nestle Confectionary
 Novartis Pharmaceuticals Australia Pty Ltd
 NOVO Shoes
 OPTUS Business
 PACCAR Australia
 Pfizer Inc.
 S.O. Asher Consultants Pty Ltd
 Sun Pharma ANZ Pty Ltd
 The Gates Industrial Corporation Foundation
 Vanttastic Construction

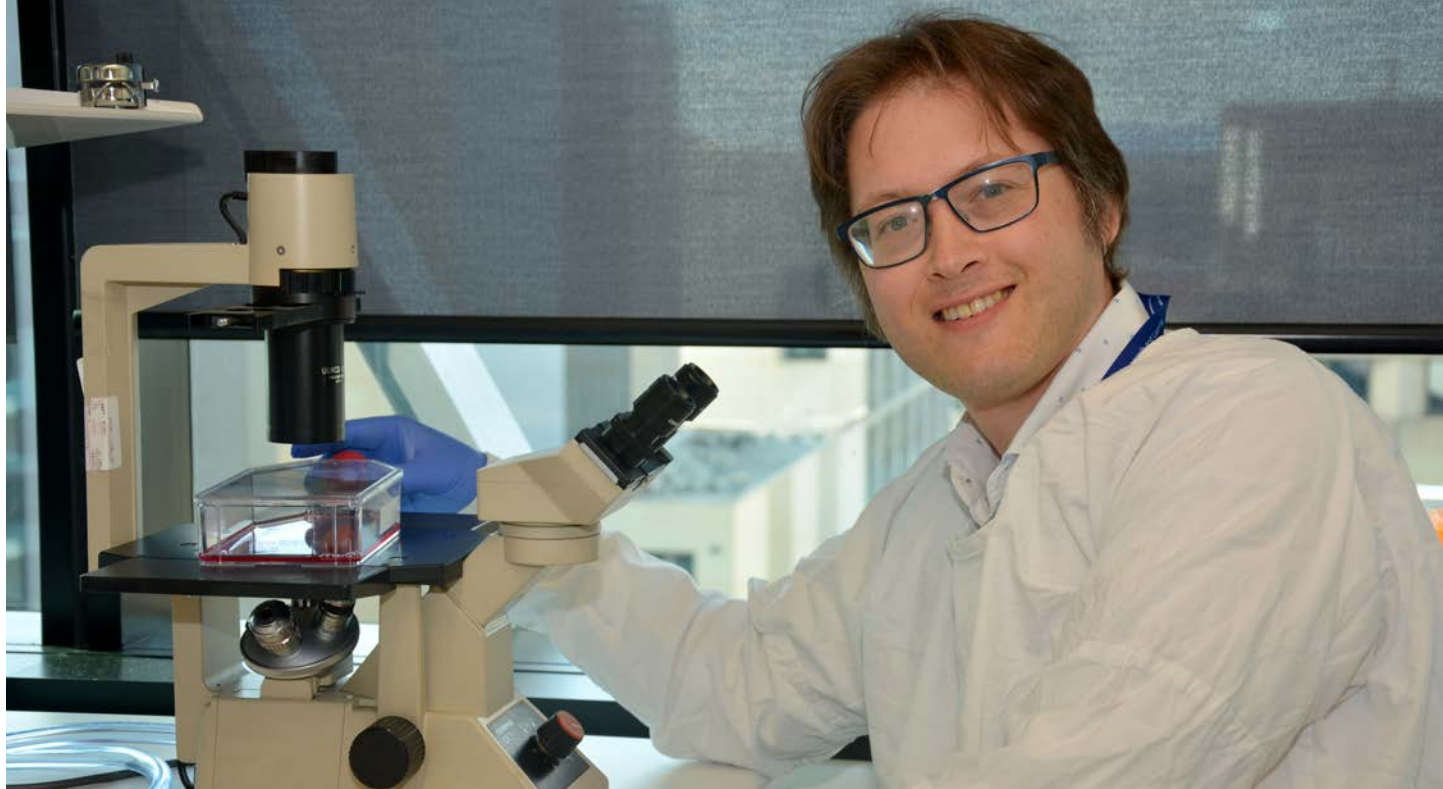
Community Fundraising

Adelaide Chinese Community
 AIA Construction
 AIME Charity Trust
 Mrs Loretta Allen
 Associazione Padovani Nel Mondo
 Australasian Helenic Educational Progressive Association (AHEPA)
 Australian Chinese Events Committee (ACEC)
 Mr Timothy Barrett & Mrs Catherine Barrett
 Liqin Chen
 Chinese Masonic Society
 Ms Teresa Chung
 Mr Josh Davis
 Mr Nick Dileo
 Discovery International
 DISHA – The Direction to Hope
 Huichao Du
 Family & Friends of Kyriakos Gerohristodoulou
 Family & Friends of Gail Leask
 Family & Friends of Shane Lewis
 Dr Sarah Farrand

Federation of Chinese Organisations Association of Victoria Inc
 Feed the Frontline Aus
 Mr Russell Hitchcock
 Impact the Future Giving Circle
 Kokkinopliton of Melbourne
 Mr Hai Gia Lee
 Lions Breakfast Club Geelong Inc
 Mr Harry Ma
 Mr Steve & Mrs Robyn Mahoney
 Matty's Soldiers
 Mr Mauricio Munoz
 Melbourne Unitarian Peace Memorial Church
 Mrs Melissa Chen / Mills Kitchen
 Mernda Primary School
 MNC Spartan Team
 Nghe Dieu Que
 NSW Federation of Chinese Organisations
 Oceania Federation of Chinese Organisations SA Division
 Oceania Federation of Chinese Organisations VIC Division
 Orestias The Victorian Association of Argos
 Otway Districts Football Club
 Pho Bo Ga Mekong Vietnam (Vic) P/L
 Mr Deane Reynolds & Mrs Maxine Quinlan
 Rotary Club of Brighton North
 Mrs Sara Taji
 See Yup Society
 Shepparton Magistrates' Court
 Shenzhen Association
 St Georges Road Primary School
 The Glen Asian Grocery
 The Ky Enterprises Pty Ltd
 The Rangers Inc.
 Ms Thea Thomas
 Tai The Tran
 Mr William Tsang
 Wing Cheong Enterprises P/L
 Ci Zhang
 Ms Shirley Zhu

Friends of the RMH

Ms Audrey Cheah
 Mrs Barbara Haynes OAM
 Mrs Diana Frew
 Mrs Joan Montgomery AM, OBE
 Mrs Marian Lawrence
 Mrs Susan Sherson
 Mr & Mrs Weickhardt



Associate Professor Niell Corcoran

World-class research

Major funding boost for prostate cancer prognosis and treatment

In 2019 The Royal Melbourne Hospital (RMH) and the University of Melbourne received \$5.4 million for research into prostate cancer, including \$4M from the Prostate Cancer Research Alliance – a joint initiative between Movember and the Australian Government.

The funding supports the PRECEPT project which brings together genomics, immunotherapy and health services research to establish genomic biomarker-based tests to assist decision-making in prostate cancer treatment.

The team includes national and international leaders in prostate cancer research and is led by Associate Professor Niall Corcoran, a urological surgeon and research scientist at The RMH.

The team's work is already well underway. They recently wrapped up a clinical trial focussing on treatment which targets a particular gene, called FGR, and are now analysing its outcomes. In late 2021, a second trial will begin to explore ways of improving a patient's response to immunotherapy by injecting them with an immune-stimulating agent to test whether this helps to control their disease.

Not only is the team investigating new treatment options, but they are trying to optimise the patient experience. Using survey responses, the team will seek to understand what information assists patients in critical decision-making related to their care.

“The ability to predict how likely prostate cancer progresses at the time of diagnosis and provide men with more tailored treatment strategies to ensure the best health outcomes are the critical enablers to stop disease progression. Movember is pleased to have supported this project as part of the Prostate Cancer Research Alliance and we look forward to seeing the results from the research team, which we believe have great potential to lead to new breakthroughs in reducing the number of men who die from prostate cancer” said Paul Villanti, Executive Director Programs of Movember.

Thank you to the Prostate Cancer Research Alliance for its support to expand research and treatment options into prostate cancer.



Australian Government
Department of Health



MOVEMBER
FUNDED PROJECT

Pfizer supports The Royal Melbourne Hospital to fund Inflammatory Bowel Disease Fellowship

A Pfizer 2020 Inflammatory Bowel Disease (IBD) Fellowship will provide an opportunity for an early career specialist gastroenterologist to support The Royal Melbourne Hospital IBD Unit with evaluation of new approaches for assessment, management and quality control for IBD.

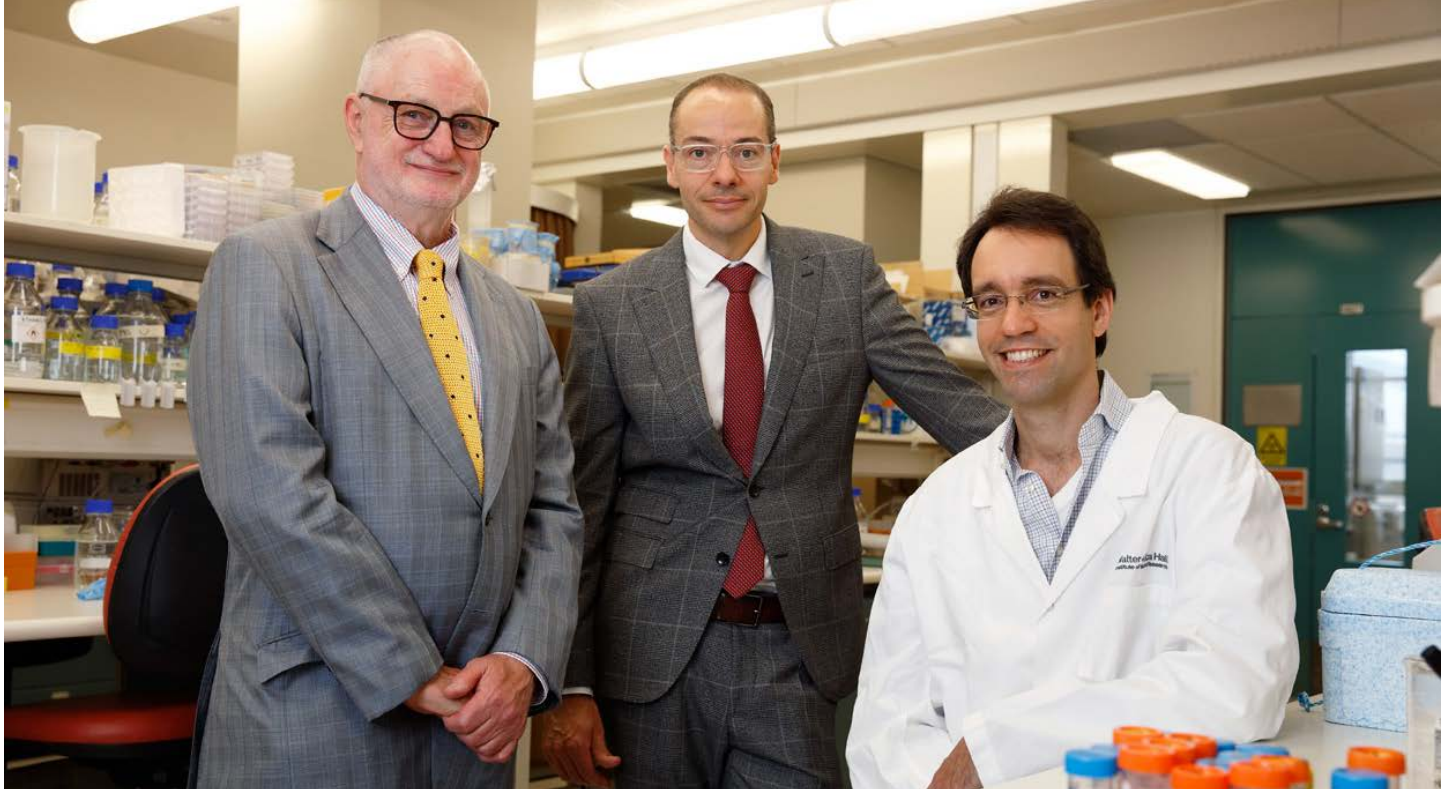
The Fellow will investigate novel modalities for assessing the narrowing of the large intestine in Crohn's disease, which will take the form of an observational study involving 20 patients, establish a standardised assessment framework for endoscopists, for reporting disease activity in patients with Ulcerative Colitis and establish quality control indicators for dysplasia surveillance (presence or development of abnormal cells); whilst promoting an overall understanding of the assessment and management of IBD patients.

IBD is a chronic relapsing autoimmune disease characterized by episodic disease flares that establish cumulative damage to bowel function and structure. IBD is an umbrella term for Crohn's and Ulcerative Colitis (UC) Disease. While Crohn's disease can affect any part of the gastrointestinal tract, Ulcerative Colitis occurs in the large intestine and rectum. Both are characterised by chronic inflammation of the gastrointestinal tract with Australia having among the highest prevalence in the world.

In Australia, IBD is becoming more prevalent, more complex, and more severe. Affecting 1 in 250 individuals aged 5-49, IBD is a chronic and largely hidden disease that affects the sufferer's personal, social and work life. Almost 75,000 Australians have Crohn's disease or ulcerative colitis, with this number projected to increase to 100,000 by 2022. Direct costs resulting from hospitalisation are also increasing, with a significant cost burden related to healthcare utilisation.

“Fellowships in IBD provide a vehicle for advanced training in health and medical research. The 2020 Pfizer Fellowship will provide opportunities to foster IBD medical research and invest in the highest quality researchers and IBD projects at RMH, a tertiary academic centre of excellence in the management of patients with IBD” said Dr Britt Christensen, Head of IBD at The Royal Melbourne Hospital.





From Left to right: Prof David Wiesenfeld – Director, Head & Neck Tumour Stream, RMH, A/Prof Oliver Sieber – Laboratory Head, Personal Oncology, WEHI and Mr Tim Iseli – Head of Otolaryngology, Head & Neck Surgery, RMH

The Garnett Passe and Rodney Williams Memorial Foundation funds pioneering research collaboration for oral cancers

In 2020, our Melbourne-led research consortium received a \$255,000 Conjoint Grant from The Garnett Passe and Rodney Williams Memorial Foundation to establish The Victorian Comprehensive Cancer Centre (VCCC) Program for Organoid-Informed Precision Medicine for Oral Squamous Cell Carcinoma. Organoid technology has the potential to revolutionise treatment for patients with oral cancer.

Head and neck cancer is a devastating disease with poor survival rates. Oral squamous cell carcinoma (OSCC) is ranked as the eighth most common malignant cancer worldwide, with more than 657,000 new cases and 330,000 deaths each year.

Aggressive treatment can be curative, but relapse rates for advanced cancers exceed 65 per cent, with significant morbidity. If cancers recur after surgery and radiotherapy treatment, the only current salvage option is radical surgery with a dismal chance of cure.

Many patients who fail first-line therapies cannot be offered surgery due to involvement of margins of vital structures including carotid artery, skull-base or spine. Even with best practice care today, patients with advanced oral cancer face an arduous

course of treatment with significant disability and uncertainty.

There is an urgent need for reliable personalised model systems that can identify treatment strategies for individual patients to reduce morbidity and mortality.

Organoid technology for oral cancer: a potential platform for personalised cancer therapy.

Patient-derived organoid technology, integrating immune cells and next-generation sequencing approaches, is a breakthrough technology poised to transform clinical care and drug development. Organoids are balls of living tumour cells which faithfully represent the original tumour from which they are derived, and can be used as models to examine tumour biology and test sensitivity to drug treatments.

With seed funding from the Garnett Passe and Rodney Williams Memorial Foundation, this initiative is establishing an OSCC Organoid-Informed Precision Medicine Program in the Melbourne Biomedical Precinct, a strategic collaboration between The Royal Melbourne Hospital (RMH), VCCC, Walter and Eliza Hall Institute (WEHI), Peter MacCallum Cancer Centre (PMCC) and University of Melbourne.

A unique surgeon-scientist collaboration, the program is being led by Mr Tim Iseli, an Ear, Nose & Throat Surgeon and Head of Unit, Department of Otolaryngology, Head & Neck Surgery RMH, and scientist Associate Professor Oliver Sieber, Laboratory Head in the Personalised Oncology Division at WEHI.

Tim is an expert on endoscopic sinus surgery and thyroid, head and neck cancer surgery, and brings a long term commitment to excellence in head and neck oncology surgery. Oliver's research group aims to understand the molecular pathology of human head and neck cancer to develop strategies to improve treatment and patient outcomes. His laboratory's research program focuses on identification of clinically relevant molecular subtypes of cancer, translation of cancer molecular biomarkers into clinical applications, discovery of molecular mechanisms of cancer progression, and development of new drug combinations for the treatment of metastatic disease. His team has made major research contributions to the genetics and biology of cancer.

This Australian-first research will develop organoid technology utility to personalise treatment for individual patients, identify new treatment opportunities, and translate new biological understanding into more precise and effective therapies.

Over three years the initiative will establish and characterise a living human OSCC organoid biobank of advanced tumours; determine the predictive value of OSCC organoids for patient radiation and chemotherapy responses by establishing clinic-ready workflows to assess whether tumour organoid responses to treatments correlate with patient clinical responses; and establish a platform for studying immune cell activity against OSCC to accelerate immunotherapy development. This Australian-first program hopes to deliver outcomes for translation into clinical practice within the next 3-5 years.

The long-term benefit for oral cancer patients will be incorporation of organoid testing into individual patient care, reducing the need for radical surgery, and associated functional impairment and disability.

We anticipate that organoid-informed personalisation of treatment for oral cancer patients will reduce treatment-associated morbidity and ultimately lead to improved patient survival outcomes.

The Royal Melbourne Hospital: How we are working towards finding cures for cancer and supporting better outcomes for cancer patients.

The Royal Melbourne Hospital provides high-quality cancer treatment programs, translational research, surgical and medical expertise, and key support services including

clinical care and emergency medicine. We are one of Victoria's largest providers of cancer care and treatment, caring for more than 37,000 patients each year.

As partners in the Victorian Comprehensive Cancer Centre (VCCC), The Royal Melbourne Hospital is working together with Peter MacCallum Cancer Centre, the Walter and Eliza Hall Institute of Medical Research (WEHI) and University of Melbourne to deliver diagnosis, treatment and clinical research services across the Parkville Precinct to provide the best in cancer care to our patients.

The RMH has the highest state-wide patient load of oral cancers. Our Departments of Otolaryngology, Head and Neck Surgery and Oral and Maxillofacial Surgery provide specialised treatment and management of Head and Neck Oncology patients, Victoria's largest, most comprehensive specialty.

The Walter and Eliza Hall Institute has made a major investment in organoid technology across a broad range of tumour types, including colorectal cancer, pancreatic cancer, breast cancer and rare cancers, with facilities equipped with liquid handling robotics and imaging systems dedicated to organoid analyses. To date, scientists at WEHI have generated tumour organoids from more than 200 patients, for utilisation in translational and preclinical research. Organoids are routinely established within two weeks and drug sensitivity testing completed within 3-5 weeks, timeframes relevant to clinical decision making. A similar effort is feasible in oral cancers given WEHI's expertise in organoid culture and drug sensitivity testing.

Supporting life-changing medical advances in ENT

The Garnett Passe and Rodney Williams Memorial Foundation improves peoples' lives through advancing ear, nose and throat (ENT) research, surgery and care. The Foundation does this by empowering and supporting researchers and clinical practitioners to solve real-world problems, by providing funds and resources to the most promising people and projects.

The Garnett Passe and Rodney Williams Memorial Foundation was established by the late Mrs Barbara Williams to honour the memory of her two husbands, Garnett Passe (an Otolaryngology Head and Neck Surgeon) and Rodney Williams, one of the largest bequests ever made to Australian medicine.





Prof Emeritus Norman A Beischer AO

The Norman Beischer Medical Research Foundation funds new research addressing sleep apnea in multiple pregnancy

A Royal Melbourne Hospital and Royal Women's Hospital research collaboration received a \$24,000 grant from the Norman Beischer Medical Research Foundation to pilot a screening study to determine the prevalence and severity of sleep apnea in multiple pregnancy. The project is addressing the need for reliable, non-invasive home-based tests to identify those most at risk

Obstructive sleep apnea occurs when there are frequent pauses in breathing during sleep. The back of the mouth and throat contain soft muscles, and when we sleep these muscles relax. These muscles and nearby soft tissues can sometimes vibrate causing snoring, but occasionally can fully close. This can block the flow of air to the lungs. Oxygen levels in the body may then drop which causes distress to the brain which wakes the body to breathe again. These frequent awakenings cause a rise in blood pressure and heart rate as well as fragmented unrefreshing sleep which results in daytime tiredness and low mood.

Obstructive sleep apnea in pregnancy affects up to 15 per cent of women, and is associated with adverse outcomes for both mother and fetus. These include high blood pressure, pre-eclampsia, diabetes, low birth weight and pre-term delivery. The greatest risk factors for sleep apnea

in pregnancy are advanced maternal age and elevated BMI, and both risk factors are increasing in the Australian pregnant population, particularly in twin or multiple pregnancies. The greater physical and hormonal strain of a multiple pregnancy are likely to contribute to the presence of sleep apnea.

Sleep apnea is a common, serious but treatable condition in pregnancy and women pregnant with twins or triplets may be at greater risk. Several methods to identify sleep apnea have been tested in women pregnant with one baby, however there are no dedicated studies demonstrating their application to twin or multiple pregnancy. With the help of the Norman Beischer Foundation, we aim to determine how commonly sleep apnea occurs in multiple pregnancy.

A collaboration between Dr Megan Rees (pictured right), Respiratory and Sleep Physician at the Royal Melbourne Hospital, Dr Stephen Cole, Obstetrician and Maternal-Fetal Medicine Specialist and Head of the Multiple Pregnancy Clinic at the Royal Women's Hospital, with statistical support from Obstetrician Dr Tom Cade; the project will address the validity of a simple screening questionnaire, and the need for reliable, non-invasive home-based tests to identify those most at risk. Dr Megan Rees, who is the RMH lead for the Australian Bronchiectasis Registry and co-chair of the Respiratory Infectious Diseases Special Interest Group of the Thoracic Society of Australia and New Zealand said:

“This funding will assist the research team to pilot a screening study to evaluate the usefulness of several established non-invasive screening tools to determine the prevalence and severity of sleep apnea in multiple pregnancy; and additionally to determine which screening tool is most useful for this group of patients.”



“Determining the prevalence and severity of sleep apnea will have significant implications for patient care. Support from the Beischer Foundation will enable us to identify a condition that can be readily treated with significant benefits to mother and baby.” said Dr Rees.

The Norman Beischer Medical Research Foundation – supporting and promoting improvements in the reproductive health of women and in the health of their babies and infants.

The Norman Beischer Medical Research Foundation was established in 1981. The Foundation supports clinical research by Medical Practitioners, Nurses and/or Scientists engaged in the investigation of diseases and conditions which affect women and/or babies. The Foundation supports and promotes improvements in the reproductive health of women and in the health of their babies and infants. The Norman Beischer Medical Research Foundation actively supports research into obstetrics and the prevention, control and treatment of gynaecological diseases and related problems. It funds clinical and scientific research by leading and emerging researchers and uses this research to educate and inform medical practice in Australia and elsewhere.

Claire Aird was 55 years old when she was diagnosed with head and neck cancer, first undergoing an 11-hour operation with multiple teams of surgeons and receiving subsequent radiation treatments. Her family motivated her to face her diagnosis with bravery and maintain her great sense of humour. Sadly Claire lost her battle after her cancer returned one year later. She left behind a generous gift in her will to support Head and Neck Cancer research at The RMH.

Claire Aird





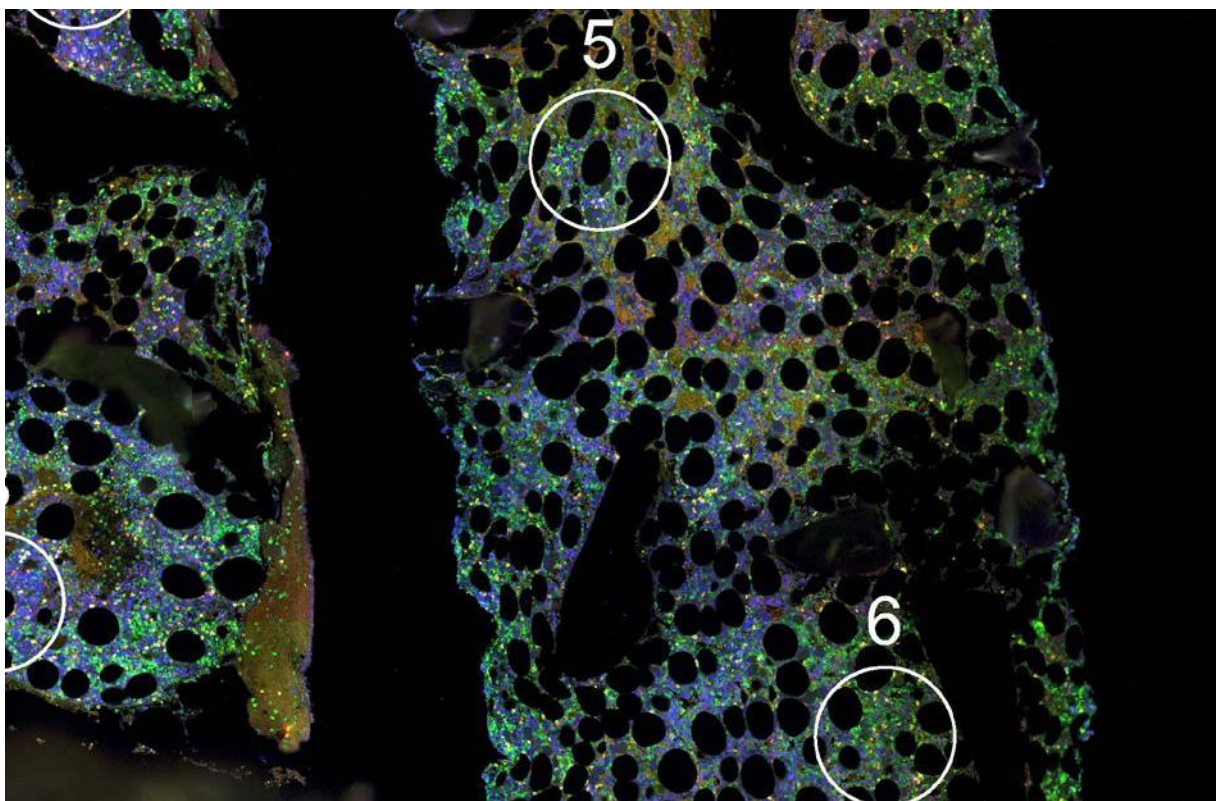
Dr Rachel Koldej, Senior Scientist, ACRF Translational Research Laboratory

Philanthropy enables research into rare blood cancer

Hairy Cell Leukaemia (HCL) is a rare and slowly growing cancer. Thanks to generous donations from the Fight Cancer Foundation and The McNally Family Foundation, Dr Rachel Koldej is leading research into how to better combat this insidious blood cancer. Rachel was awarded the Fay Duncan Women in Research Fellowship through Fight Cancer Foundation and used the opportunity to progress research into HCL using cutting edge technology, called Digital Spatial

Profiling (DSP). Her research has already been presented at a number of local and international conferences and has been published in the journal “Immuno-Oncology and Technology”. Rachel has been trained to use the DSP machine, and the technology will enable a range of new research projects into not only cancer but a range of serious blood conditions. The Royal Melbourne Hospital Foundation is very grateful to the McNally Family Foundation and Fight Cancer Foundation for their generous contributions towards the cost of this equipment, which was jointly purchased with the Peter MacCallum Cancer Centre.

DSP Image of HSL Cancer Sample







Dana Zilinskas

Developing our workforce

Melissa Weinstein awarded Dana Zilinskas Fellowship

In 2019, experienced social worker, Melissa Weinstein was awarded the Dana Zilinskas fellowship – an education and travel scholarship awarded to an emerging social work leader, providing them with an opportunity to further study or travel overseas and learn from world-leading services.

Melissa's scholarship proposal explored Family and Systemic Therapy, an approach which helps reduce distress and conflict for patients and their families when making difficult medical and lifestyle decisions.

Thanks to the scholarship, Melissa was able to extend her knowledge in this area by completing a Graduate Certificate in Family and Systemic Therapy. Enabling her to provide education to the social work department and improve care across The Royal Melbourne Hospital.

This would not be possible without the extraordinary generosity of Andrew Zilinskas and his family who established this inaugural scholarship in Dana Zilinskas' honour.

Dana Zilinskas qualified as a social worker at the University of Melbourne in 1953 and worked at St. Vincent's, the Brotherhood of St Laurence and taught part time at the Department of Social Studies. She came to The RMH as a social worker in 1962 and by 1976 was the Chief Social Worker.

New fellowship for emerging research leaders

In 2020, thanks to a generous donation made by Professor Andrew Roberts AM, The Royal Melbourne Hospital Foundation was able to establish The Emerging Research Leaders Fellowship.

This award will provide an opportunity for an early career researchers to have their work profiled and highlight the exciting research being undertaken at The Royal Melbourne Hospital.

We look forward to presenting this new prestigious award in 2021.

New master's degree will provide advanced training in Emergency Mental Health

Since 2015, The Royal Melbourne Hospital (RMH) Emergency Department has seen a 378% increase in mental health presentations. To help ED nursing staff treat and manage the alarming increase in this cohort of patients, The RMH Foundation funded post graduate masters studies in emergency mental health for 10 ED nurses. This funding was made possible by a generous gift in will from the Estate of Audrey Florence Nancarrow, who was also a long term donor to The RMH Foundation.

With the opening of the Mental Health and Alcohol and other Drug (AOD) hub within our emergency department, this Master's program is a timely addition to furthering the training and education of our workforce. Staff will develop their knowledge within this space, improve decision making and critical thinking capacity as well as their overall ability to care for mental health and AOD patients.

We are truly thankful to Audrey for having the foresight to include a gift in her will to support our continued efforts to train and educate our workforce.

Johnson and Johnson Medical

Thank you to Johnson and Johnson Medical who have again provided funding towards an Annual RMH Orthognathic Trauma Fellowship.

Associate Professor Alf Nastri, Head of the Maxillofacial Unit, expressed his gratitude for this impactful contribution to the hospital.

“Thank you to Johnson and Johnson Medical – This fellowship will significantly build capacity to train medical professionals in this emerging field, increasing The Royal Melbourne Hospital's ability to treat and care for the growing number of patients requiring these surgeries.”

Imaging staff at The RMH





State-of-the-art CT scanner in The RMH Radiology Department

Innovative equipment and technology

A new ECMO machine for critically ill patients

Bruno Moras is a grape and citrus farmer from Mildura who so generously funded a life-saving Extracorporeal Membrane Oxygenation (ECMO) machine for The Royal Melbourne Hospital (RMH).

Following a complex cardiac surgery at Melbourne Private Hospital, Bruno's wife Anne had a difficult time recovering and was transferred to the RMH's Intensive Care Unit in need of ECMO support.

Similar to a heart-lung by-pass machine used in open-heart surgery, an ECMO machine pumps and oxygenates a patient's blood outside the body, allowing the

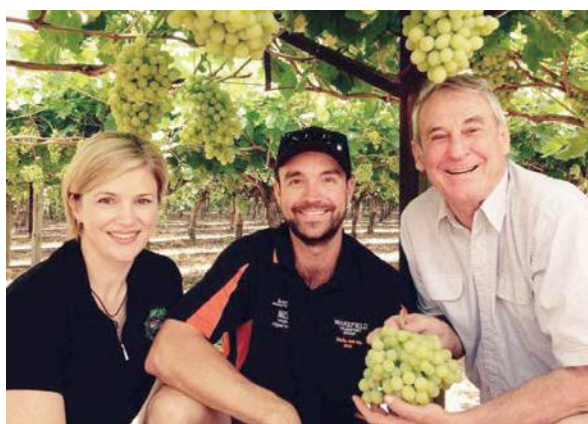
heart and lungs to rest. When a patient is connected to fund a new ECMO, blood flows through tubing to an artificial lung in the machine that adds oxygen and takes out carbon dioxide; then the blood is warmed to body temperature and pumped back into the patient's body.

Thankfully, this cutting edge technology was able to save Anne's life. While the experience was traumatic for Bruno and his family, The Royal Melbourne Hospital Foundation was truly thankful for Bruno's decision to fund an ECMO machine as a thank you to the wonderful team at The RMH.

By recognising his selfless gesture, we hope that Bruno's story can inspire others to support The RMH.

Bruno's contribution comes not long after our 2019 Tax Appeal which raised funds to purchase a second and much needed ECMO machine. The RMH is fortunate to now utilise two new ECMO machines which will save the lives of future patients. We are forever grateful to everyone who donated to this wonderful cause.

Bruno Moras (right) pictured with his wife and son



Our most successful Christmas Appeal ever

Our Neurosurgery service is the leading and busiest program in Australia, providing care for Victorians with the most acute and complex conditions like Julia Fin.

In 2018, Julia, a 37-year-old mother of two, woke in the early hours of the morning to find paramedics in her bedroom. Without any prior warning, Julia had suffered a massive seizure which was caused by a rare and aggressive brain tumour that had grown to the size of a kiwi fruit.

She was airlifted to The Royal Melbourne Hospital where our Director of Neurosurgery, Associate Professor Dr Kate Drummond was waiting to rush her into surgery.

This level of care requires us to continually update our specialised equipment to remain at the forefront of innovation and best practice healthcare.

Thanks to your kindness and generosity, in 2019 we raised more than \$145,000 for our annual Christmas appeal to help purchase a new Airo mobile CT scanner for the Neurosurgery Department that will help future patients just like Julia.

New partnership with BankVic

In 2020, The Royal Melbourne Hospital Foundation and BankVic established a major corporate partnership that will support our Emergency Department. Funding will enable the RMH to purchase an electronic medication dispensing unit for our Emergency Department Triage, whilst also sponsoring our annual staff excellence awards.

As one of two Major Trauma Services in Victoria, The RMH is home to the busiest Emergency Department in Victoria, caring for an average of 80,000 patients per year. A third of these patients are triaged in the waiting room and will directly benefit from the purchase of this new machine as nurses can now provide medication more efficiently, significantly improving patient flow, reducing waiting times and enhancing patient experience.

Previously, staff would need to leave the waiting room to access medications, leading to longer waiting times for patients who required medication prior to being treated.

The RMH Foundation and The RMH Emergency Department deeply appreciate the support of BankVic.



Julia Fin pictured with her husband and two children



The RMH Chief Executive, Professor Christine Kilpatrick AO, pictured with S.O. Asher Consultants representatives, Alex Tanner (left) and Kristin Giannasca (right)

Infrastructure for the Future

New operating theatres

S.O. Asher Consultants, a valued corporate partner of The Royal Melbourne Hospital Foundation, have provided funding that will enable The Royal Melbourne Hospital (RMH) to purchase cutting-edge technology and equipment for our recently constructed operating theatres.

“The Royal Melbourne Hospital is one of the largest and busiest hospitals in Victoria. We hope our partnership can drive greater impact and outcomes for patients requiring surgery.”

Due to the coronavirus pandemic, demand for elective surgery has reached critical levels. This has been driven by delays in surgery caused by the pandemic, in addition to the increasing burden of chronic disease, trauma related injuries and a rapidly ageing population. Our two new operating theatres will supply much needed capacity to cope with this increase in demand.

S.O. Asher Managing Director Jennifer Jameson, shared that she was thrilled they could contribute to this project and establish a major partnership with The Royal Melbourne Hospital Foundation.

We are truly thankful for S.O. Asher’s on-going commitment and valuable support that will assist with improving healthcare for all Victorians for many years to come.

“Parkville has a reputation as one of the top five biomedical precincts globally so we must keep pace with advances in digital health. This system will mean researchers across all three hospitals will be able to collaborate more efficiently, conduct more clinical trials with higher patient numbers, and larger researcher projects – ultimately saving more lives.”

Technology saving lives

In 2018, The Royal Melbourne Hospital Foundation raised funds for our most ambitious technology upgrade to date, transitioning from paper-based patient medical records to electronic medical records (EMRs).

The Connecting Care Program, which went live in October 2018, is the most significant technology investment in the organisations history, completely changing the way the hospital works.

The RMH Chief Executive, Professor Christine Kilpatrick, said the initiative has transformed patient care and research in the Parkville precinct.

“The Connecting Care program is fundamental to improving the quality and safety of patient care,” Professor Kilpatrick said.

“EMRs have been introduced in hospitals around the world and are proven to reduce medication errors, clinical incidents, hospital acquired infections, length of stay and mortality rates.”

The RMH Foundation is very pleased to have contributed \$20M to support the successful implementation of the new EMR system.



Hospital staff using our new EMR technology



The RMH Foundation staff

The Royal Melbourne Hospital Foundation
Jane Bell House, Level 4,
10 Wreckyn Street, North Melbourne VIC 3051

P (03) 9342 7111
E: Info@RMHFoundation.org.au
W: TheRMH.org.au/Support-Us

This material cannot be reproduced without the written permission of The Royal Melbourne Hospital Foundation.

Melbourne Health ABN 73 802 706 972



**The Royal
Melbourne Hospital
Foundation**